

On Instructions from S & F Hudson,

**STANDING STRAW
FOR SALE
BY PUBLIC AUCTION**

537 ACRES OF STANDING STRAW

VIZ:

289 ACRES WINTER WHEAT

103 ACRES WINTER OATS

145 ACRES OILSEED RAPE

**VARIOUS SIZED LOTS SITUATED NEAR TO
WHITTINGTON AND ELLESMERE.**

**SALE TO COMMENCE AT 7:30PM ON
WEDNESDAY 10TH JULY 2024**

**OSWESTRY CATTLE AUCTIONS
(STORE CATTLE RING)
OSWESTRY
SY11 4QA**

**For further information please contact Jonathan Bevan on
01691 652367**

BOWEN

GENERAL REMARKS

Bowen are favoured with instructions from S & F Hudson to offer for sale by Private Treaty, 537 acres of standing straw comprising of 289 acres of Winter Wheat, 103 acres of Winter Oats and 145 acres of Oilseed Rape.

The Hudson family have a renowned reputation for producing excellent crops and prospective purchasers are recommended to view the crops prior to the sale day.

METHOD OF SALE

The crops are offered for sale by public auction in the lots as set out in this catalogue to take place on Wednesday the 10th July 2024, at Oswestry Livestock Market (Store Cattle Ring) with the sale commencing at 7:30pm. Bids should only be made following inspection of the crops by the bidder.

HARVESTING ARRANGEMENTS

The sellers will inform purchasers of harvesting arrangements. All straw must be baled and removed by the purchasers as soon as possible after combining.

Please note that all balers must be blown clean and empty upon entering fields to prevent Black Grass contamination. The Sellers reserve the right to refuse access to any purchasers who does not adhere to this rule.

VIEWING

All crops can be viewed at any reasonable time during daylight hours, with a set of these sales particulars. All purchasers are deemed to have inspected and satisfied themselves to the location and quality of the crop upon payment. No refunds of any kind will be made by the Sellers.

PAYMENT

All lots must be paid for in full on the night of the sale. Only cheques and bank transfers will be accepted.

INSURANCE

The Sellers or their Auctioneers accept no liability for any damage which may occur after purchase. We would recommend that purchasers ensure that a suitable insurance policy is obtained to cover any possible damage after purchase.

AREA's & PLANS

Whilst the Sellers and their Agents have taken care in preparing this catalogue, purchasers must satisfy themselves as to the description and quantities of each lot. All maps are not to scale and are for identification purposes only.

FURTHER DETAILS

For further information or to make an offer please contact Jon Bevan on (01691) 652367 or 07837 385062.

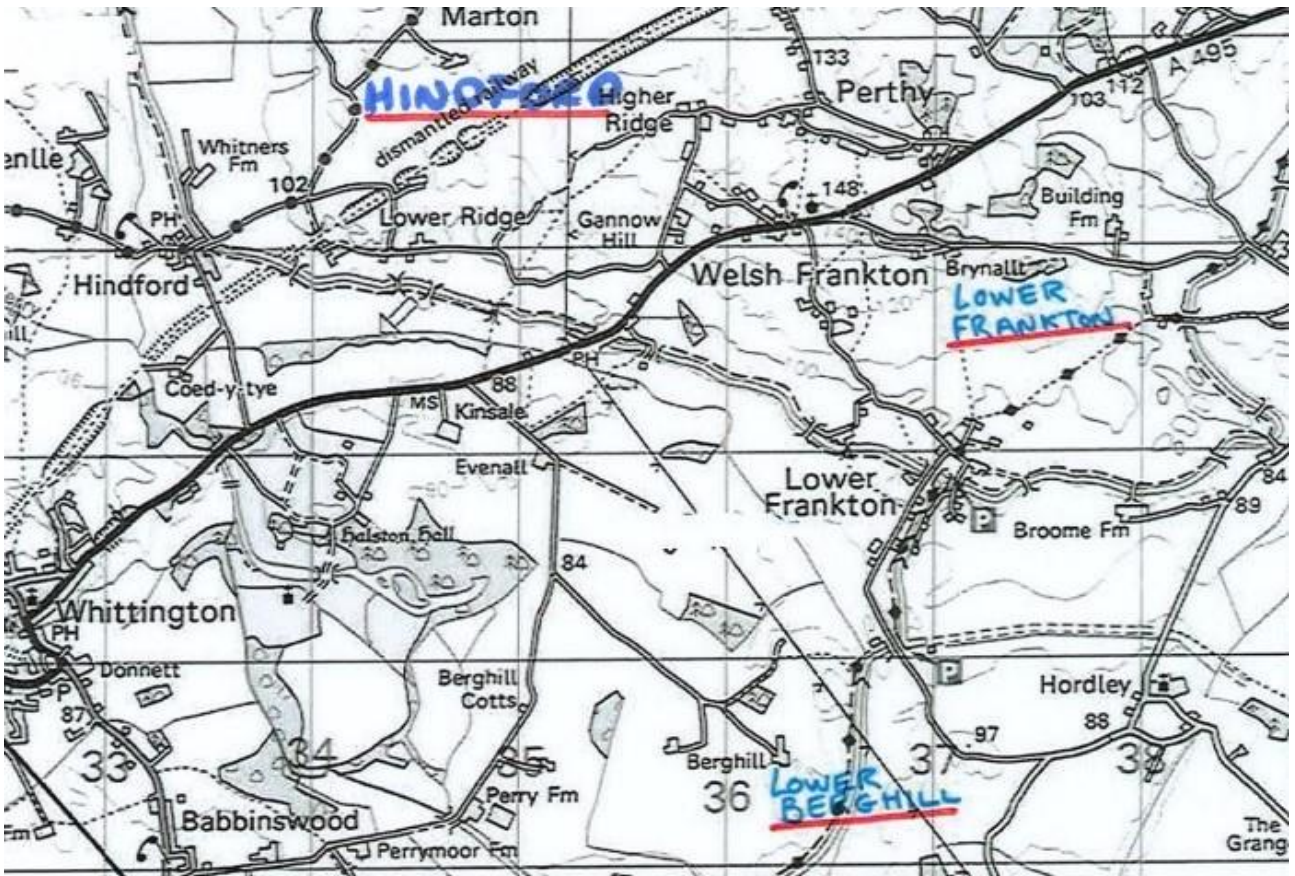
AGENTS NOTE

Astrokerb herbicide has been applied to ALL OILSEED RAPE fields. Purchasers should be aware that manure containing straw from these fields should only be applied on grassland and cereals.

CONDITIONS OF SALE

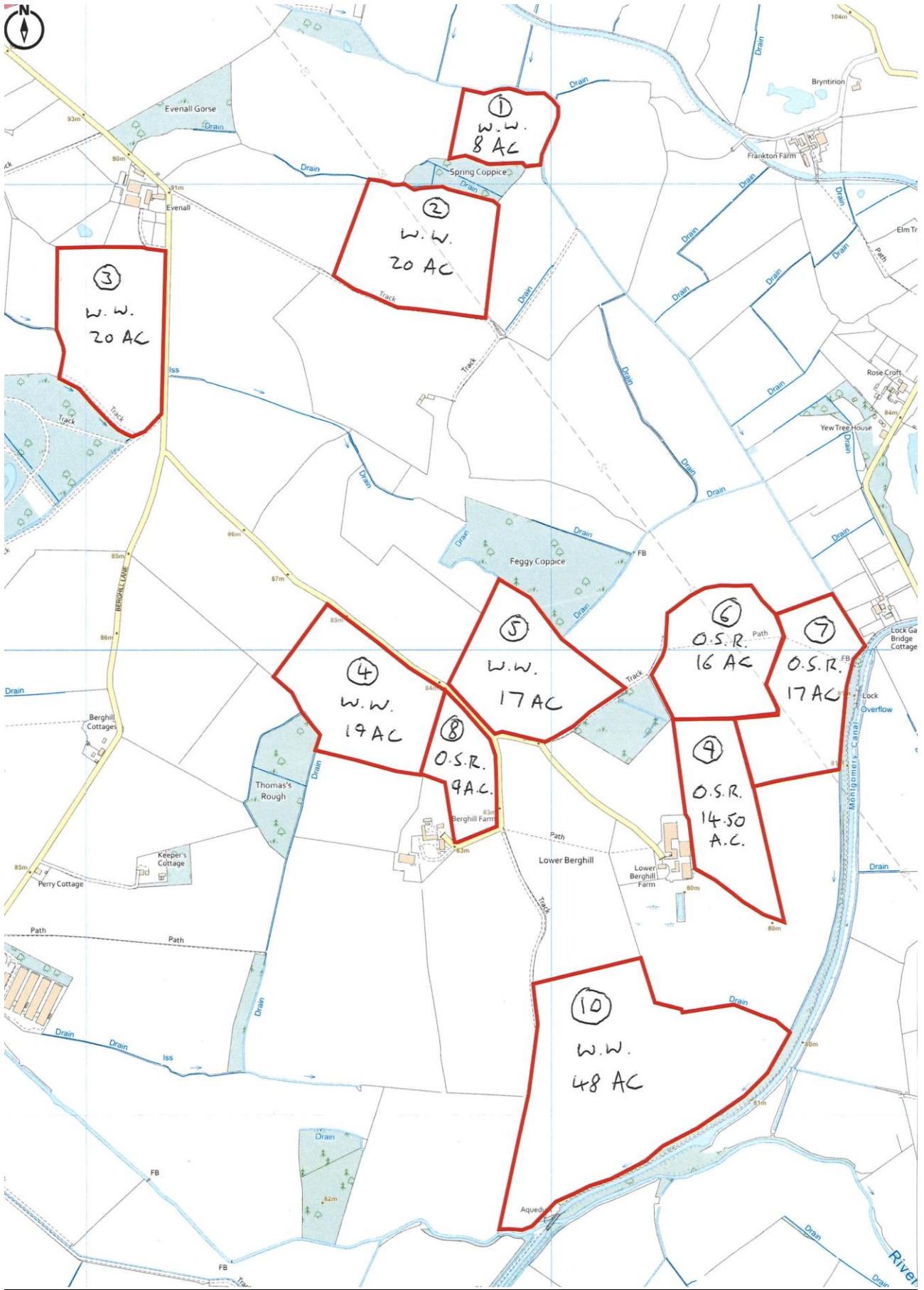
- The Sellers and the Auctioneers can take no responsibility whatsoever regarding the quantity of any lot and Purchasers will be deemed to have full knowledge of each lot when bidding whether they have viewed or not.
- Anyone buying for a third party must inform the Auctioneers before bidding and will be responsible for the straw until payment has been made.
- The Highest bidder will be the Purchaser and no bidding can be retracted after the fall of the hammer. The auctioneer reserves the right to refuse any bidding and in the event of a dispute the lot may be put up again at the Auctioneers discretion.
- Lots are for sale subject to any reserve price imposed by the Vendor. The Auctioneer has the right to withdraw any lot at any point until the fall of the hammer.
- Access is reserved through all fields to reach adjoining lots provided and Purchasers must liaise with each other if access is required through a crop that has been cut but not baled.
- The Purchaser will indemnify the Vendor for any damage that may be caused to gates, fences, buildings or equipment etc in the course of the removal of a lot.
- The Auctioneers intend to sell in the order lotted and described but reserve the right to make any alterations if so required.
- The Auctioneers will not be responsible for any loss/damage caused by fire, accident or otherwise. If a crop is lost through bad weather after combining this shall also be the responsibility of the Purchaser, not the Vendor or Auctioneers.
- In the event of any Lots not selling in the saleroom, any further negotiations are to be conducted through the Auctioneers, as Agents to the Vendor, and these conditions of sale will also apply to private sales.

LOCATION PLANS



**WINTER WHEAT & OILSEED RAPE STRAW AT EVENALL & LOWER BERGHILL
FARM, WHITTINGTON, SY11 4PB**

Field Number	Crop	Area (acres)
1	Winter Wheat	8
2	Winter Wheat	20
3	Winter Wheat	20
4	Winter Wheat	19
5	Winter Wheat	17
6	Oilseed Rape	16
7	Oilseed Rape	17
8	Oilseed Rape	9
9	Oilseed Rape	15
10	Winter Wheat	48



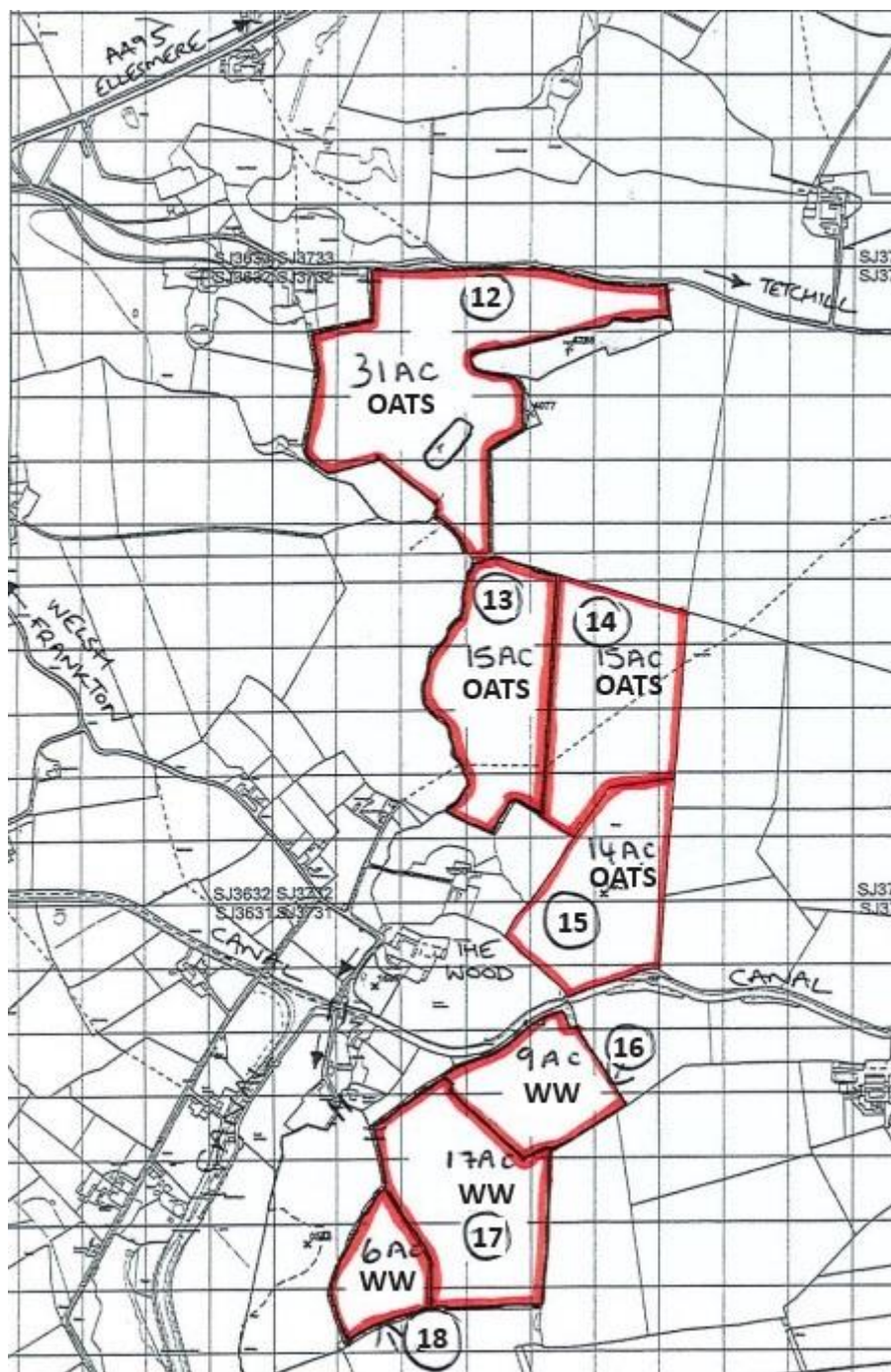
OILSEED RAPE STRAW AT HINDFORD, WHITTINGTON, SY11 4NP

Field Number	Crop	Area (Acres)
11	Oilseed Rape	26



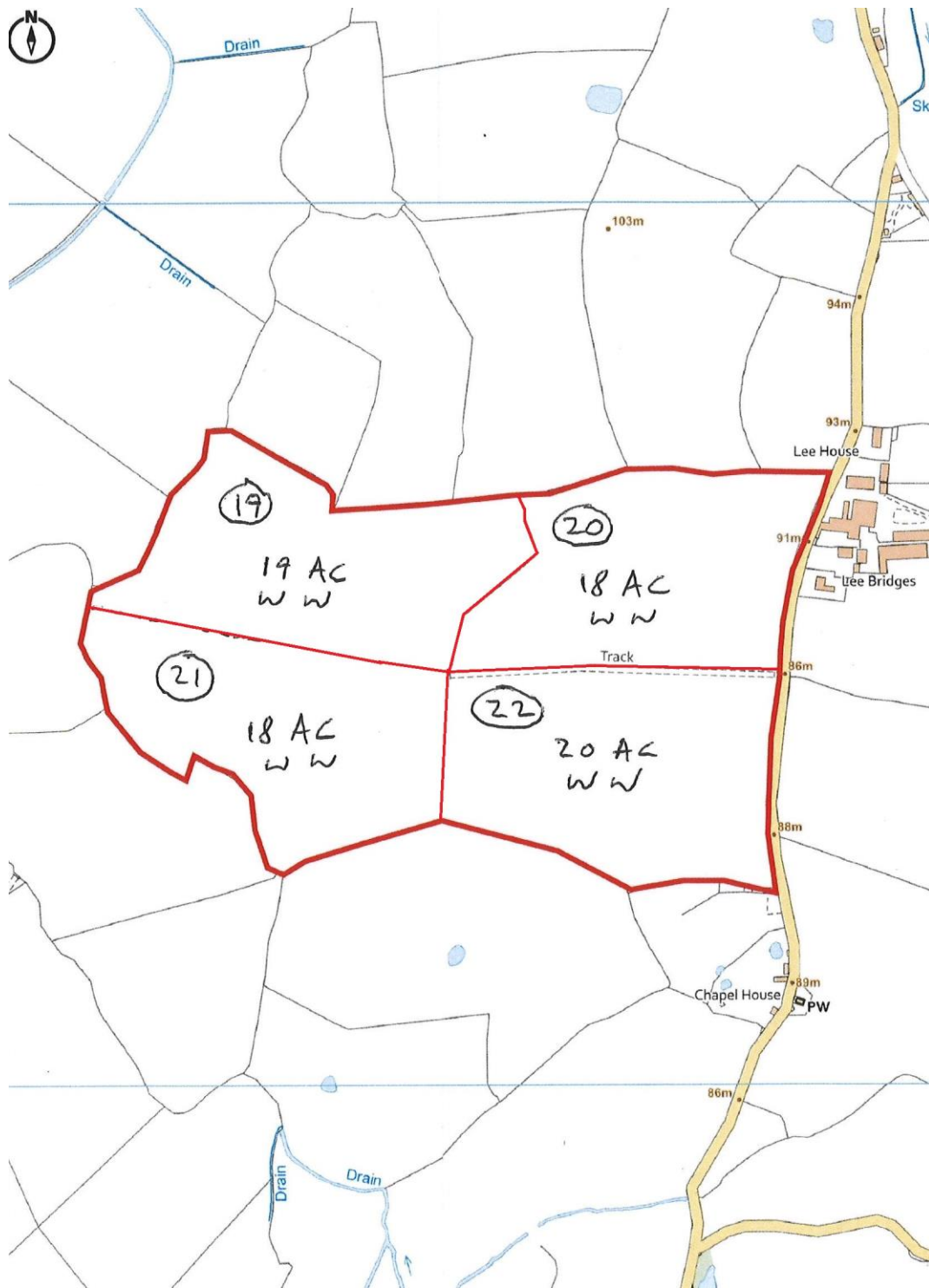
OAT & WINTER WHEAT STRAW AT LOWER FRANKTON, WHITTINGTON, SY11 4PB

Field Number	Crop	Area (acres)
12	Winter Oats	31
13	Winter Oats	15
14	Winter Oats	15
15	Winter Oats	14
16	Winter Wheat	9
17	Winter Wheat	17
18	Winter Wheat	6



**WINTER WHEAT STRAW AT LEE BRIDGES, LEE, ELLESMERE,
SHROPSHIRE, SY12 9AF**

Field Number	Crop	Area (acres)
19	Winter Wheat	19
20	Winter Wheat	18
21	Winter Wheat	18
22	Winter Wheat	20



WINTER WHEAT, OILSEED RAPE AND WINTER OAT STRAW AT COLEMERE HOUSE FARM, ELLESMERE, SHROPSHIRE, SY12 0QW

Field Number	Crop	Area (acres)
23	Oilseed Rape	12
24	Oilseed Rape	20
25	Winter Wheat	35
26	Winter Oats	28
27	Winter Wheat	15
28	Oilseed Rape	30

